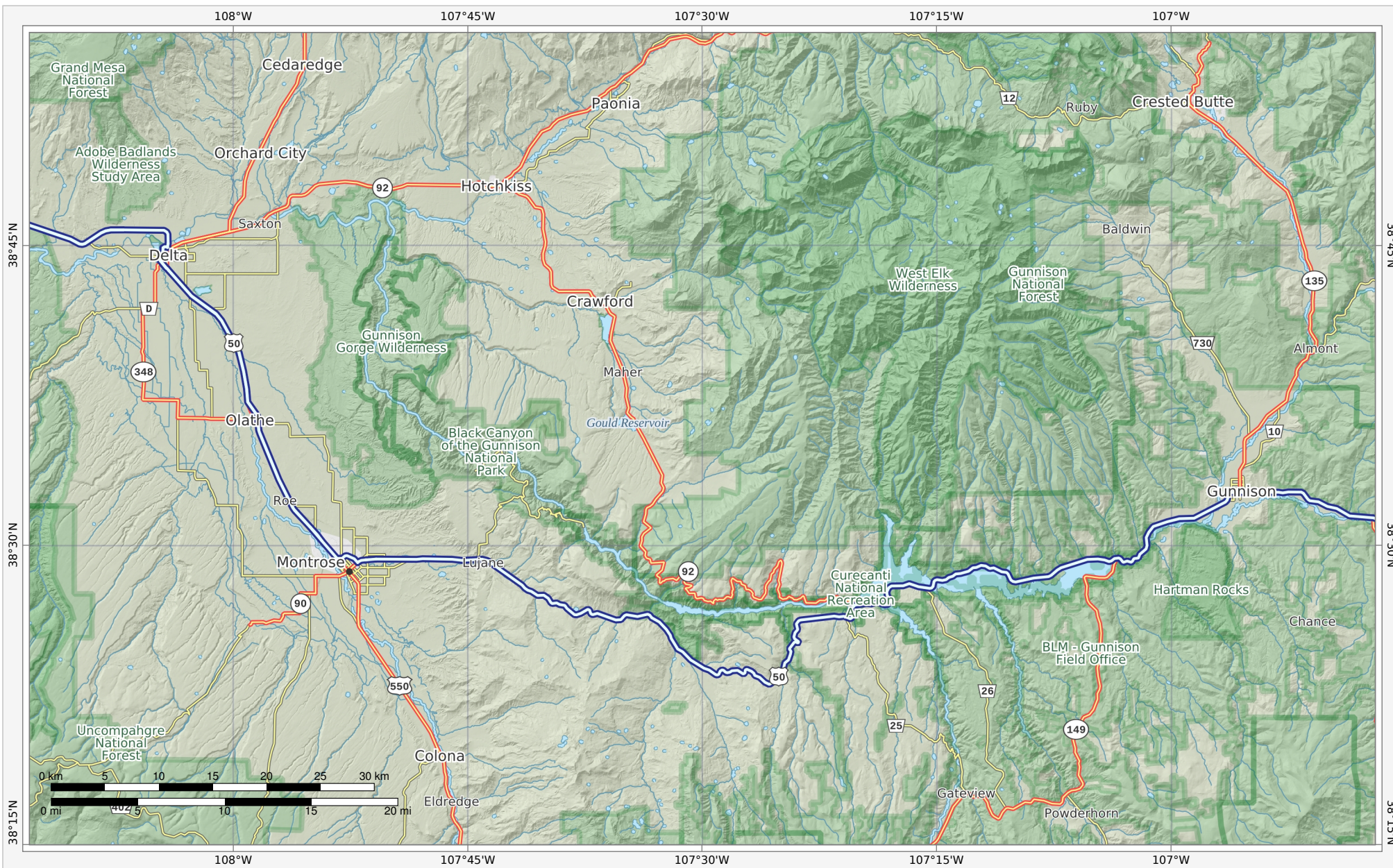


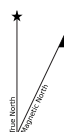
# Black Canyon of the Gunnison NP [Curecanti NRA]



Bottom Left: 108°13'3"W 38°15'1"N Top Right: 106°46'58"W 38°55'38"N  
 Ground Scale 1:485,000  
 Geographic Grid (WGS84)

© 2022 MapSherpa. All rights reserved.  
 Use of this map and its contents are governed by the MapSherpa  
 Terms and Conditions available at [www.mapsherpa.com/terms](http://www.mapsherpa.com/terms)

This map is not to be used for marine or air navigation.



Approximate  
 Mean  
 Declination  
 8°47'52"  
 Annual Change  
 0°6'23"W  
 Graphic provides direction of Approximate  
 Mean Declination for center of map

Date of Production: May 2nd, 2023

Full data attribution: [www.mapsherpa.com/data/terrain/terrain2022](http://www.mapsherpa.com/data/terrain/terrain2022)  
 Map Data: © OpenStreetMap contributors, NRCAN, GeoBase, National Atlas of the United States,  
 National Wetlands Inventory, U.S. Census Bureau, USGS, EROS Center, North American Atlas, geonames.org  
 We make every effort to ensure the accuracy of data in our publications, however, it is possible  
 that errors may be present. While we sincerely regret any inconvenience this may cause you,  
 we cannot accept responsibility for any damages that may arise from using this publication.