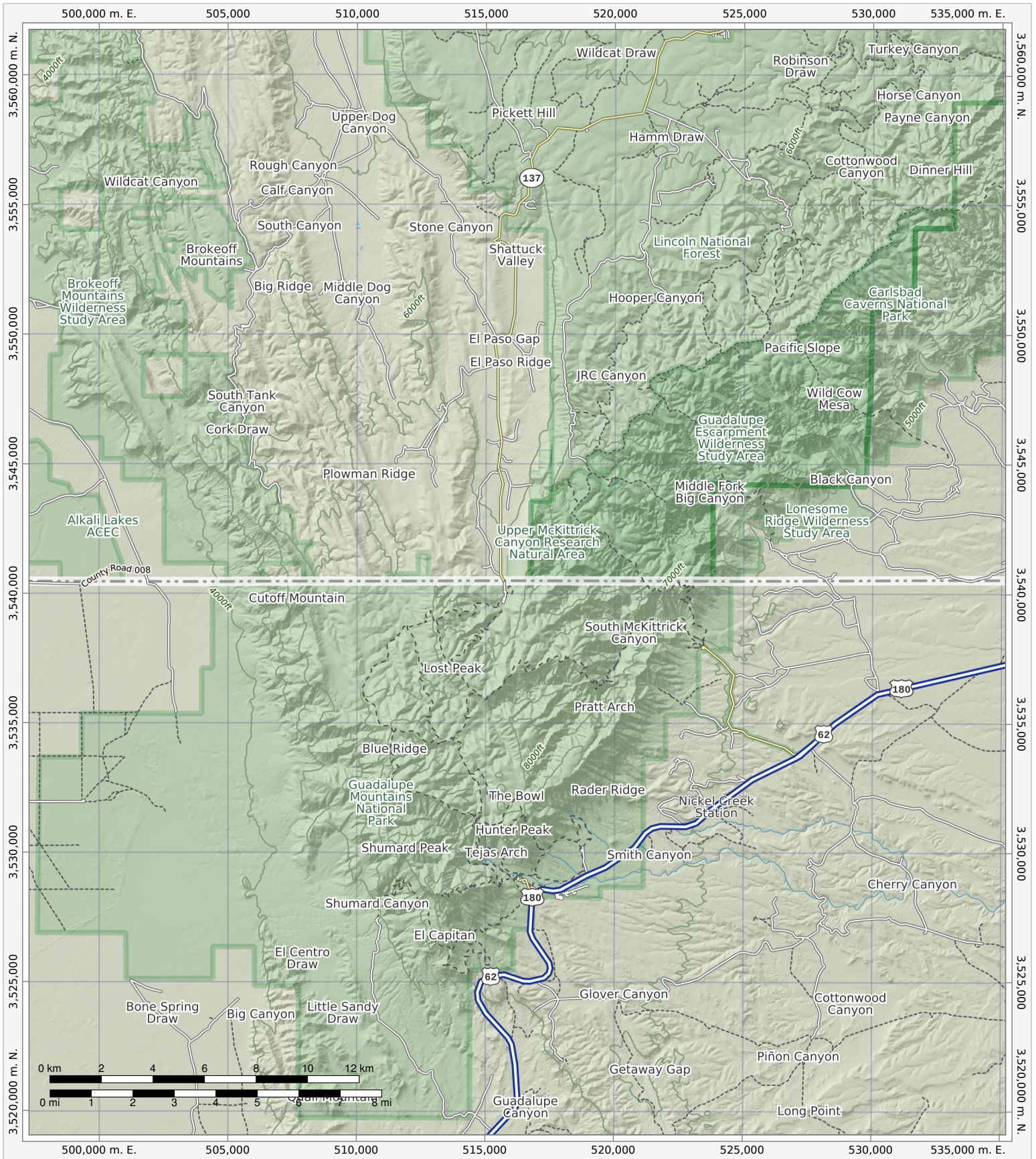


# Guadalupe Mountains National Park



Bottom Left: 105°1'44"W 31°48'27"N Top Right: 104°37'40"W 32°11'32"N  
Ground Scale 1:195,000  
UTM Grid (WGS84) Zone 13 North

Date of Production: May 2nd, 2023

© 2022 MapSherpa. All rights reserved.  
Use of this map and its contents are governed by the MapSherpa  
Terms and Conditions available at [www.mapsherpa.com/terms](http://www.mapsherpa.com/terms)  
This map is not to be used for marine or air navigation.

Full data attribution: [www.mapsherpa.com/data/terrain/terrain2022](http://www.mapsherpa.com/data/terrain/terrain2022)  
Map Data: © OpenStreetMap contributors, NRCAN, GeoBase, National Atlas of the United States,  
National Wetlands Inventory, U.S. Census Bureau, USGS, EROS Center, North American Atlas, geonames.org  
We make every effort to ensure the accuracy of data in our publications, however, it is possible  
that errors may be present. While we sincerely regret any inconvenience this may cause you,  
we cannot accept responsibility for any damages that may arise from using this publication.