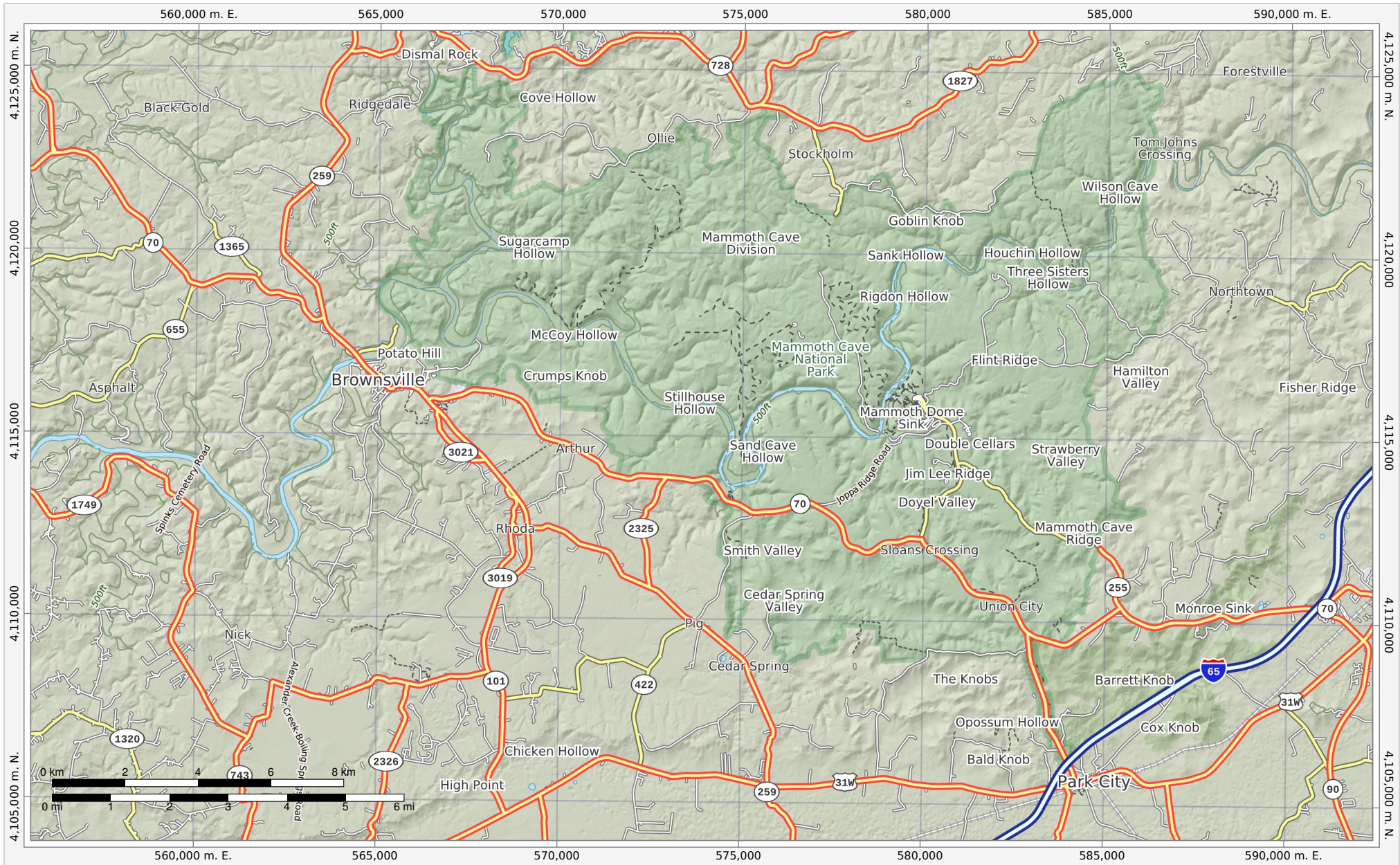


Mammoth Cave National Park



Bottom Left: 86°22'31"W 37°4'44"N Top Right: 85°57'37"W 37°16'43"N
Ground Scale 1:145,000
UTM Grid (WGS84) Zone 16 North

© 2022 MapSherpa. All rights reserved.
Use of this map and its contents are governed by the MapSherpa
Terms and Conditions available at www.mapsherpa.com/terms

This map is not to be used for marine or air navigation.

Approximate
Mean
Declination
4°35'56"
Annual Change
0°3'10"W
Graphic provides direction of Approximate
Mean Declination for center of map

Date of Production: May 2nd, 2023

Full data attribution: www.mapsherpa.com/data/terrain/terrain2022
Map Data: © OpenStreetMap contributors, NRCAN, GeoBase, National Atlas of the United States,
National Wetlands Inventory, U.S. Census Bureau, USGS, EROS Center, North American Atlas, geonames.org

We make every effort to ensure the accuracy of data in our publications, however, it is possible
that errors may be present. While we sincerely regret any inconvenience this may cause you,
we cannot accept responsibility for any damages that may arise from using this publication.