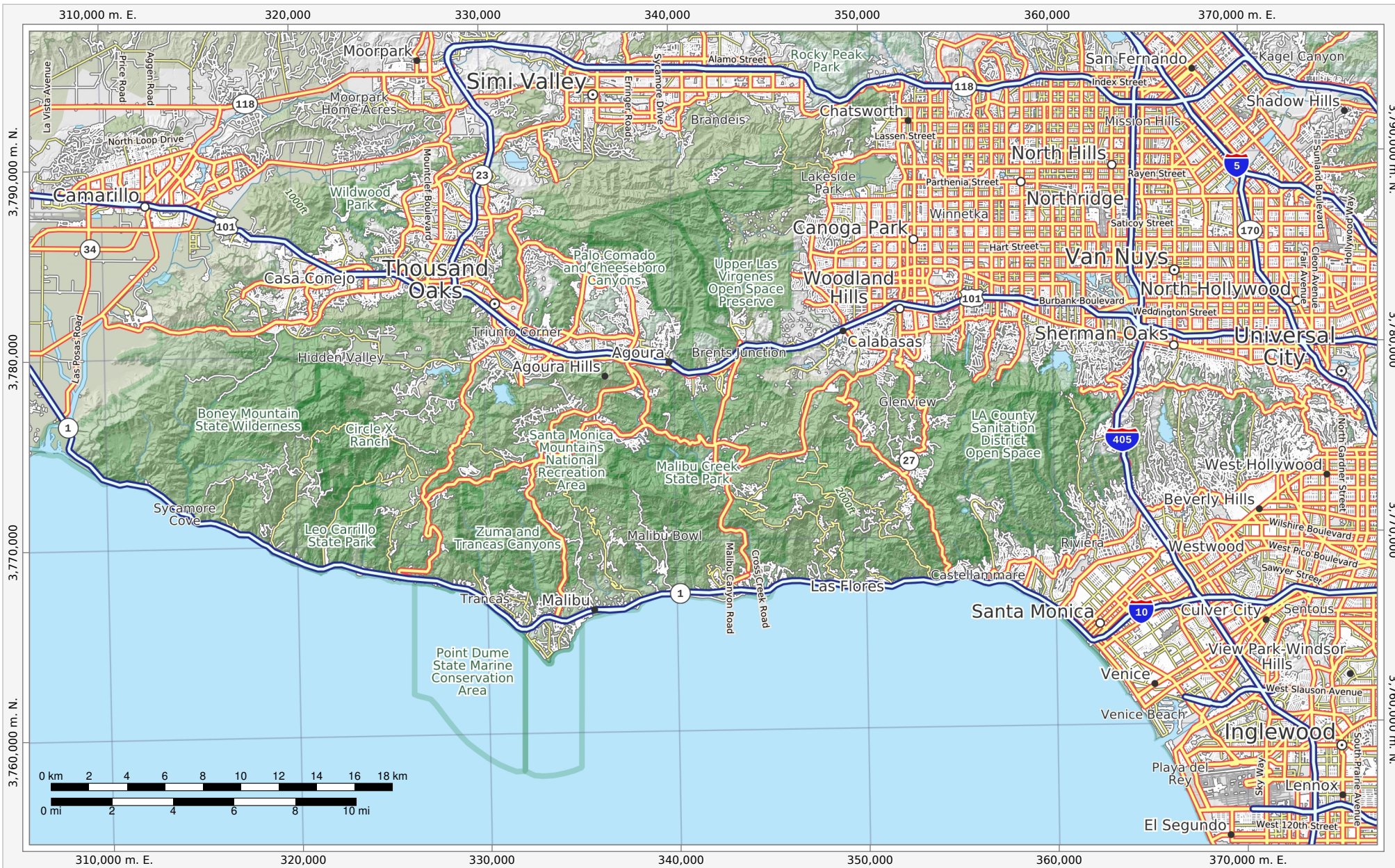
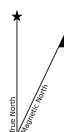


Santa Monica Mountains National Recreation Area



Bottom Left: 119°6'13"W 33°54'52"N Top Right: 118°19'59"W 34°17'59"N
 Ground Scale 1:275,000
 UTM Grid (WGS84) Zone 11 North



Approximate
 Mean
 Declination
 11°41'5"

Annual Change
 0°5'9"W

Graphic provides direction of Approximate
 Mean Declination for center of map

Date of Production: May 2nd, 2023

© 2022 MapSherpa. All rights reserved.
 Use of this map and its contents are governed by the MapSherpa
 Terms and Conditions available at www.mapsherpa.com/terms

This map is not to be used for marine or air navigation.

Full data attribution: www.mapsherpa.com/data/terrain/terrain2022
 Map Data: © OpenStreetMap contributors, NRCAN, GeoBase, National Atlas of the United States,
 National Wetlands Inventory, U.S. Census Bureau, USGS, EROS Center, North American Atlas, geonames.org

We make every effort to ensure the accuracy of data in our publications, however, it is possible
 that errors may be present. While we sincerely regret any inconvenience this may cause you,
 we cannot accept responsibility for any damages that may arise from using this publication.